



EXAMINATIONS COUNCIL OF ESWATINI
Eswatini Prevocational Certificate of Secondary Education

PREVOC AGRICULTURAL TECHNOLOGY

5920/01

Paper 1 Multiple choice

Specimen Paper October/November 2025-2026

Additional Material: Calculator

1 hour

Total: 40 marks

INSTRUCTIONS:

The answer grid consists of your name, centre number and candidate number and must be signed after completion of the paper.

This paper consists of 40 multiple choice questions.
Four possible answers are given for each question.

Choose the **best** answer and shade your choice in the oval under the correct letter in soft pencil **HB** on the separate multiple choice Answer Grid provided.

Read all questions carefully.
Answer **all** questions.

EXAMPLE: 41. What is the name of a female pig?

- A boar
- B flock
- C sow
- D swine

41	A <input type="radio"/>	B <input type="radio"/>	C <input checked="" type="radio"/>	D <input type="radio"/>
----	----------------------------	----------------------------	---------------------------------------	----------------------------

For Examiner's Use	
Marks	

This document consists of **12** printed pages.

Multiple Choice

Answer **all** questions in this section **(40 Marks)**.

- 1 What should be the depth of litter for day old chicks in a poultry house?
 - A 0 - 4 cm
 - B 5 -10 cm
 - C 20 -25 cm
 - D 30 - 35 cm

- 2 Which of the following is used to provide heat for chicks in broiler production?
 - A brooder
 - B curtain
 - C incubator
 - D litter

- 3 Which is the correct order of growth for chickens?
 - A brooding, growing, incubation, adult.
 - B brooding, incubation, growing, adult.
 - C incubation, growing, brooding, adult.
 - D incubation, brooding, growing, adult.

- 4 What is the gestation period of a pig?
 - A 1 month 1 week and 1 day
 - B 2 months 2 weeks and 2 days
 - C 3 months 3 weeks and 3 days
 - D 4 months 4 weeks and 4 days

- 5 When is creep feed given to pigs?
 - A from birth to 6 weeks
 - B from 7 weeks to 3 months
 - C from 4 months to 6 months
 - D from 7 months and above

- 6 Which of the following management practice is carried out to prevent injury in piglets?
 - A castration
 - B iron injection
 - C tail docking
 - D vaccination

- 7 Which breed of goats is raised to produce wool?
- A Angora goat
 - B Boer goat
 - C Eswatini goat
 - D Saanen goat
- 8 **Fig. 8.1** shows an identification method used in goat production.



Fig 8.1

What is the identification method shown in **Fig 8.1**?

- A ear lettering
- B ear notching
- C ear tagging
- D ear piercing

9 Fig. 9.1 shows a livestock tool.



Fig.9.1

What is the name of the tool shown in Fig 9.1?

- A burdizzo
 - B disbudder
 - C elastrator
 - D hoof trimmer
- 10 What does subcutaneous injection mean?
- A injecting in the blood
 - B injecting in the muscle
 - C injecting in the vein
 - D injecting under the skin
- 11 Which of the following group of vegetables are classified as legumes?
- A beetroot, carrot, garlic
 - B cabbage, lettuce, spinach
 - C cow peas, dry beans, pea
 - D garlic, leek, onion
- 12 What is the advantage of broadcasting fertiliser in vegetables?
- A broadcasting inhibits growth of weeds
 - B easy and quick to apply fertiliser
 - C fertiliser is easily absorbed by plants
 - D fertiliser wastage is minimised

- 13 Fig 13.1 shows an irrigation system used in vegetable production.



Fig 13.1

What is the name of the irrigation system shown in **Fig 13.1**?

- A basin
 - B drip
 - C furrow
 - D sprinkler
- 14 Fig 14.1 shows a vegetable infested by a pest.

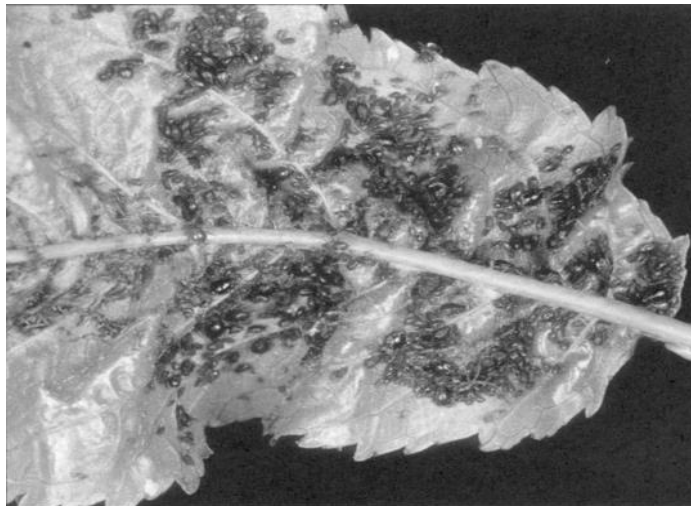


Fig 14.1

What is the name of the vegetable pest shown in the **Fig. 14.1**?

- A aphids
- B cutworms
- C late blight
- D leaf rot

- 15 Which nutrient deficiency results in the purple leaf colour in field crops?
- A calcium
 - B nitrogen
 - C potassium
 - D phosphorus
- 16 The amount of 2.3.2 (22) + 0.5% Zn fertiliser required in a 10 m² is 2 kg. Calculate the amount of fertiliser needed in a hectare of land.
- A 200 kg
 - B 1000 kg
 - C 2000 kg
 - D 4000 kg
- 17 What is the intra-row spacing for beans?
- A 10 cm
 - B 20 cm
 - C 30 cm
 - D 40 cm
- 18 What is the name of the top part of the plant that is used when grafting fruit trees?
- A lateral bud
 - B rootstock
 - C scion
 - D t-bud
- 19 Which of the following is a cultural method of controlling pests in fruit tree production?
- A fumigating planting holes
 - B growing resistant varieties
 - C spraying trees with chemicals
 - D use of natural enemies to kill pests
- 20 Where should fertiliser be applied in a fruit tree?
- A along the basin
 - B along the drip line
 - C along the tree trunk
 - D along the rootstock

- 21 Which cultivation practice is useful when controlling soil erosion?
- A contour ploughing
 - B deep ploughing
 - C harrowing
 - D sub-soiling
- 22 What is agroforestry?
- A planting of trees alongside crops
 - B planting of trees in a nursery
 - C planting of trees in a range land
 - D planting of trees to improve the environment
- 23 Which type of fence allows browsing by goats?
- A barbed wire
 - B diamond mesh
 - C living fence
 - D veld span
- 24 Which fencing post is used to increase stability in corners?
- A corner post
 - B droppers
 - C standard post
 - D struts
- 25 Which pipe accessory is used to regulate the entry of water in a tank?
- A ball valve
 - B connector
 - C elbow
 - D reducer
- 26 How can a leaking pipe be repaired in a farm?
- A cover leaking spot with soil
 - B cover leaking spot with a reducer
 - C tie leaking spot with plastic
 - D wrap leaking spot with silicon repair tape

27 Which tool is used for levelling a seedbed?

- A fork
- B hoe
- C rake
- D spade

28 Fig. 28.1 shows a farm implement.



Fig. 28.1

What is the name of the farm implement shown in Fig. 28.1?

- A disc harrow
 - B disc plough
 - C mould board plough
 - D seed planter
- 29 What is the function of a mower?
- A blowing dead organic material
 - B cutting overgrown lawn
 - C pruning ornamental plants
 - D trimming grass around lawn edges
- 30 Which of the following is an inorganic material used in landscaping?
- A bark
 - B grass
 - C gravel
 - D wood chips

31 Fig. 31.1 shows some pests that damage lawn.



What is the name of the pests shown in **Fig. 31.1**?

- A aphids
- B moles
- C red spider mites
- D termites

32 Fig. 32.1 shows a special feature of an ornamental garden.



Fig 32.1

What is the name of the special feature shown in **Fig. 32.1**?

- A conservatory
 - B hedges
 - C standards
 - D topiaries
- 33 Why is it important to sterilise soil mixtures?
- A to prevent soil borne diseases
 - B to improve the soil structure
 - C to improve soil fertility
 - D to improve soil drainage
- 34 Which of the following ornamental plants is only used as a greenery?
- A carnation
 - B ferns
 - C lillies
 - D roses
- 35 What term describes flowering plants that provide food for honeybees?
- A Fern plants
 - B Melliferous plants
 - C Orchard plants
 - D Rose plants

36 What protects the face from bee stings during harvesting?

- A bee overall
- B bee veil
- C goggles
- D smoking

37 Fig 37.1 shows a honeybee comb.

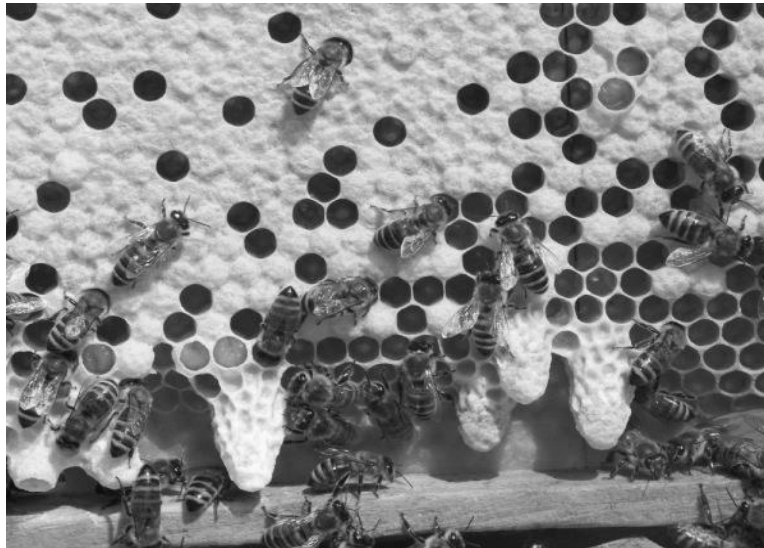


Fig 37.1

What is the name of the cell along the edges of the honeybee comb in Fig. 37.1?

- A emergency queen cell
- B growing drone cell
- C sealed worker cells
- D swarming queen cell

38 What causes swarming of honey bees in an apiary?

- A ants invasion
- B plenty of food
- C disease attack
- D wet conditions

39 Why is it important to harvest ripe honeycomb?

- A to avoid colour changes in honey
- B to avoid crystallization of honey
- C to avoid fermentation of honey
- D to avoid formation of bubbles

- 40** What is the importance of smoking the hive during honey harvesting?
- A** to calm down honeybees
 - B** to kill ants and bee beetles
 - C** to improve honey taste
 - D** to improve honey viscosity

Permission to reproduce items where third-party owned material protected by copyright is included has been sought and cleared where possible. Every reasonable effort has been made by the publisher (ECESWA) to trace copyright holders, but if any terms requiring clearance have unwittingly been included, the publisher will be pleased to make amends at the earliest possible opportunity.